

DS³

DIGITAL SECURITY SURVEILLANCE SYSTEM

DS3 is a fully redundant video capture solution with unlimited capabilities for expansion. DS3 utilizes state of the art video compression which allows for maximum storage capabilities and network streaming. Being a completely digital system, DS3 can capture full-motion video with unlimited camera support and reliability. Applying DS3's enterprise architecture-design to your facility will create better command and control along with complete situational awareness.

ADVANCED FEATURES



DS3 Server

Remote access to live and archived video through the internet

- ▶ Available through all standard browsers including Mac
- ▶ Fully compatible for wireless devices

Completely automated digital archiving - no more tapes!

- ▶ All video instantly available

Motion detection

- ▶ Activity flagged within archive for easy retrieval
- ▶ Reduced frames per second during idle recording to maximize storage
- ▶ Detection of motion activates optimal quality recording settings

Integrated digital control of pan-tilt-zoom (PTZ) cameras - no more joysticks!

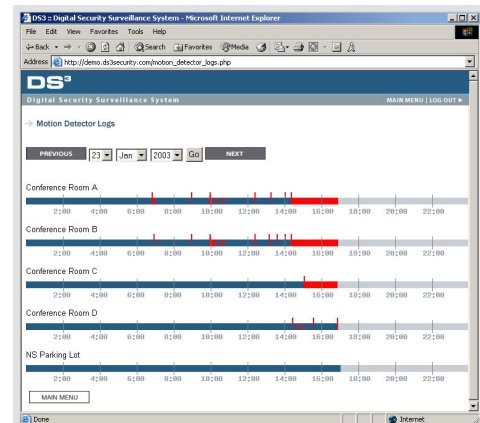
System statistics managed through secure web access

- ▶ Full logging of access to files and cameras
- ▶ Full access to logged triggers of predefined events (door opening, motion detection, card swipe, temperature change, register drawer opening, etc.)
- ▶ Full access to server and camera status, and control of settings.

Live tracking of distinct objects across multiple cameras

SUPERIOR CAPABILITY

- ▶ Simultaneously record/view/playback an unlimited number of cameras - at full quality
- ▶ Unlimited archive retention from 1 to 365+ days
- ▶ Fully redundant storage onsite or offsite for disaster recovery
- ▶ From 160 x 120 to 1024 x 768 resolution per camera
- ▶ Up to 30 frames per second per camera
- ▶ From 28.8 kilobits to 3 megabits per second per camera
- ▶ Analog, digital and wireless camera support
- ▶ Simultaneous PAL and NTSC compatibility
- ▶ "Incident video" can easily be saved, authenticated, and e-mailed to law enforcement in minutes



Remote DS3 Management - Motion Detection Page

SECURITY FEATURES

- ▶ 24 hour system intrusion monitor with notification via pager or other devices
- ▶ Flexible trigger-based alert system for custom needs
- ▶ Fully centralized on or off-site monitoring
- ▶ Multiple levels of administrative rights
- ▶ Fingerprint/Biometric access control available
- ▶ Encrypted network enabled for secure viewing of all data
- ▶ Authenticated video keys ensure genuine, tamper-free data
- ▶ To prevent accidental or malicious loss of data, system does not contain a delete function

Network Synthesis

1 Technology Drive, Suite D411
Irvine, CA 92618

tel 949 453 1805

fax 949 453 1806

web: www.networksynthesis.com

email: info@networksynthesis.com

DS³

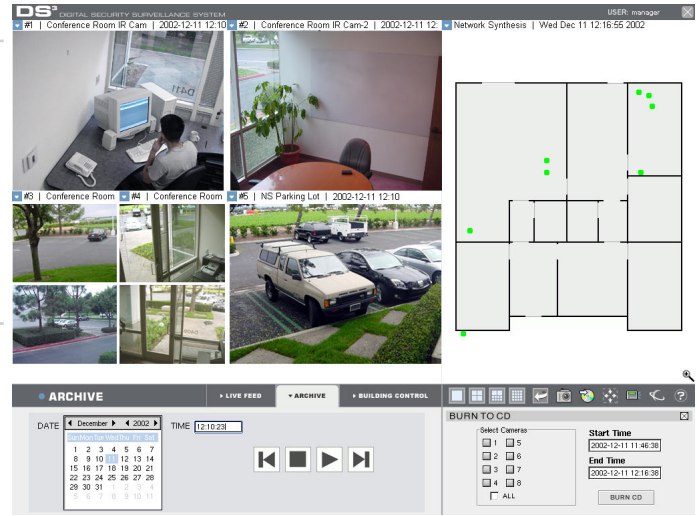
DIGITAL SECURITY SURVEILLANCE SYSTEM

FLEXIBILITY/SCALABILITY

- ▶ Complete scalability of storage and/or cameras both up and down
- ▶ System configurations can be customized for virtually any environment including multiple cameras, multiple command centers and multiple sites with varying needs
- ▶ No forced system or equipment upgrades
- ▶ Flags can be customized for any event

VALUE

- ▶ Cost effective solution for security and management needs
- ▶ Easy to use system utilizes familiar interfaces for fast acquisition of system skills and reduced labor expenditures
- ▶ Self sustaining system makes personnel intervention optional
- ▶ Customized and flexible system architecture satisfies needs of both today and tomorrow
- ▶ Digital search capability reduces search time by up to 90%
- ▶ Technical support available 24/7/365
- ▶ 2-year warranty on all equipment



DS3 Command Center Interface

PRESS RELEASE PHOTO COMPARISON

How easily can you spot...

- Glasses?
- Facial hair?
- Clothing color?
- Merchandise?

DS3 provides full color video at up to DVD quality, ensuring the data you give to law enforcement has the greatest chance of success in capturing your perpetrator.



Other security solution



DS³

DS3 10400 SERIES SPECIFICATIONS

HARDWARE

Dimensions: 19" Rack (2U height)
 Weight: 40lbs. (Shipping Weight)
 Power Input: 100 - 240 VAC
 50 - 60 Hz
 Voltage auto-sensing
 350 Watts
 Operating Temp.: 32°F to 122°F (0°C to 50°C)
 Storage Temp.: -4°F to 152°F (-20°C to 70°C)
 Video Inputs: 4
 Video Outputs: SVGA, S-Video
 Alarm Inputs: Optional
 Alarm Outputs: Optional
 Video Storage: 1.0 TB or more, CD/DVDRW

Connections:
 BNC Video Inputs
 9-pin com1, com2 serial
 15-pin SVGA
 25-pin Printer
 RJ-45 RJ-45 Ethernet
 USB IEEE Standard

VIDEO

Signal: NTSC/PAL
 Resolution:
 NTSC 320x240/640x480/800x600
 PAL 352x288
 Bandwidth 256-512 Kbps per camera (on average)
 Protocol TCP/IP, UDP, RTSP, RTP

REMOTE COMPUTER CONFIGURATION

Processor: Pentium 4
 RAM: 1GB
 Hard Drive: 40-120GB
 Video: 32 bit
 1024 x 768 (per camera)
 800 x 600 (per camera)
 Video Resolution: 640x480
 * Simultaneous viewing (16 camera/streams per viewing stations)